

DEERWOOD DISTRIBUTION CENTER

8500 Baycenter Road, Suite 18-20 | Jacksonville, Florida



**9,375 SF
AVAILABLE**

**Great Southside
Location with
Excellent Access
to I-95 and US1**

OFFICE & WAREHOUSE SPACE AVAILABLE FOR LEASE

PROPERTY FEATURES

- Available: 9,375 SF
- Asking rate: \$5.25 NNN base rent
- CAM: \$1.19 PSF (2011 Est.)
- Zoning: IBP
- Wet sprinkler system
- 3 dock doors, 10' x 10'
- Rear load building
- Located on the Southside of Jacksonville



**For Leasing
Information Contact:**



Hallmark Partners, Inc.
6675 Corporate Center Pkwy., Suite 100
Jacksonville, Florida 32216
P. 904.363.9002 | F. 904.363.0098
www.hallmarkpartners.com

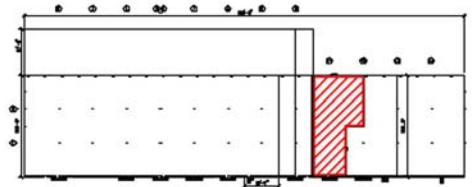
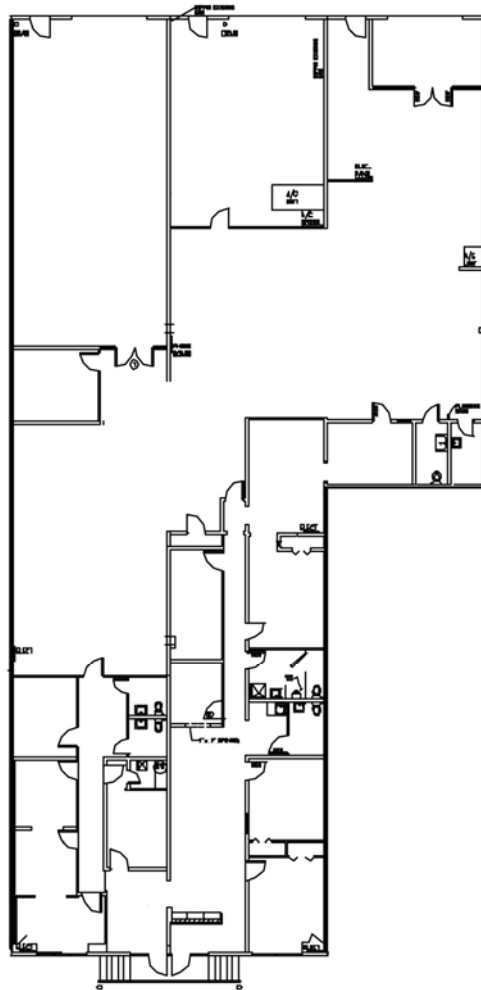
Patrick Thornton
pt@hallmarkpartners.com
P. 904.363.9002

Christian Harden
ch@hallmarkpartners.com
P. 904.363.9002



Deerwood Distribution Center

Office & Warehouse Space Available For Lease
8500 Baycenter Road, Suite 18-20 | Jacksonville, FL



 **Hallmark Partners**
BUILDING RELATIONSHIPS.

EASTGROUP
PROPERTIES

Patrick Thornton
pt@hallmarkpartners.com
P. 904.363.9002

Christian Harden
ch@hallmarkpartners.com
P. 904.363.9002

A full commission computed and earned in accordance with the rates and conditions of our agency agreement with our principal, when received from our principal, will be paid to a cooperating broker who consummates a sublease which is unconditionally executed and delivered by and between sublandlord and subtenant. (A copy of the rates and conditions referred to above are available upon request.) No warranty or representation, express or implied, is made as to the accuracy of the information contained herein, and same is submitted subject to errors omissions, change of price, rental or other conditions, withdrawal without notice, and to any specific listing conditions, imposed by our principals.